



**MOUNTAINS
& LAKES**
WORLD OF

Nassfeld
Pressegger See
nice surprise

INFO FOLDER

2020

EN



KÄRNTEN
Lust am Leben

Dear guests in the „Nassfeld-Pressegger See“ adventure region!

We are pleased to be able to welcome you as guests in the Nassfeld-Pressegger See adventure region especially this year.

The past few months have presented us all with new challenges, and yet, or perhaps precisely because of them, we are looking optimistically into the future again, and would like to make this year's summer holiday a relaxing experience for you.

Should there be any restrictions on the use of recreational services in the region due to legal regulations, federal or state notices or other unforeseeable events, we ask for your understanding. In this context, we would also like to point out that there is no entitlement to price reductions or refunds.

The availability of all leisure services is updated daily at www.nassfeld.at!

At the same time, we ask you to comply with the Covid-19 protective measures, prescribed by the government, without exception for your own safety and for the protection of other guests and the locals.

We would like to draw your attention to the following info sheet!

Thank you very much for your understanding. It's good to have you here!

Info- & Servicecenter Nassfeld-Pressegger See
and partners

GUIDELINES FOR MOUNTAIN HIKING GUIDES IN CARINTHIA



1.) HEALTHY ON TOUR

The mountain guide and the guests must feel completely healthy at the start of the tour.

2.) REDUCE THE READINESS TO TAKE RISKS

Stay well below the guests' personal ability limits when undertaking alpine activities. Consider the additional risks and difficulties involved in rescue operations and the additional strain on hospitals.

3.) KEEP DISTANCE

Keep a distance of 2 metres (this is slightly more than 2 arm lengths for an adult) and use a face mask covering mouth and nose if, in exceptional cases, keeping the minimum distance of 2 metres is not possible. The mountain guide must ensure that every guest keeps the safety distance (also during breaks, at the summit etc.) and must be able to keep the whole group within sight (e.g. by choosing a suitable route, with clear rules of conduct on the trail etc.).

4.) MOUNTAIN SPORTS ONLY IN SMALL GROUPS

The upper limit is 10 persons per group (1 mountain guide plus 9 guests). Remember that with increasing group size and depending on the difficulty of the tour, it gets more difficult to keep the safety distance and to keep track of the group. Avoid highly frequented tours and places.

5.) REFRAIN FROM NORMAL RITUALS

For example, shaking hands, hugs, kiss at the summit, offering a drinking bottle to others, etc.

6.) TAKE ALONG FACE MASK AND DISINFECTANT

In addition to the general emergency equipment, face mask and disinfectant should be carried in the rucksack for the time being. The mountain guide must ensure that every guest has a face mask during the tour.

7.) FACE MASKS FOR CARPOOLS

In addition, only two passengers may sit in each row of seats (including the driver). Travel by public transport is the preferred option.

8.) IN AN EMERGENCY, PROCEED AS ALWAYS

As a first-aider, follow the generally accepted first aid guidelines and use a face mask in addition.

FÜR EUREN SICHEREN AUFENTHALT

FOR YOUR SAFE STAY



EIGENVERANTWORTUNG FÜR SICH & FAMILIE

PERSONAL RESPONSIBILITY FOR YOURSELF & YOUR FAMILY



**HÄNDE WASCHEN/
DESINFIZIEREN**
WASH/DISINFECT HANDS



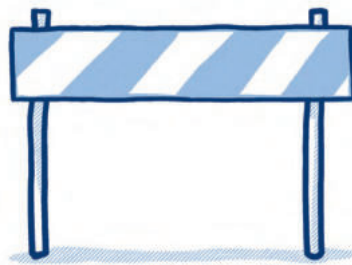
**MUND-NASENSCHUTZ
VERWENDEN**
WEAR MASKS



ABSTAND HALTEN
KEEP DISTANCE



**NACH MÖGLICHKEIT
KONTAKTLOS BEZAHLEN**
CASHLESS PAYMENT



**EVENTUELLE ZUGANGS-
BESCHRÄNKUNGEN
BEACHTEN**
OBSERVE ANY ACCESS
RESTRICTIONS



**WEITERE HINWEISE
BEACHTEN**
FOLLOW FURTHER
INSTRUCTIONS

www.sichere-gastfreundschaft.at

TABLE OF CONTENTS / TOPICS

- ➔ NASSFELD MOUNTAIN RAILWAYS
- ➔ HIKE WORLD
- ➔ ENCOUNTERING COWS ON ALPINE PASTURES
- ➔ GAILTALER ALMHUTS
- ➔ BIKEWORLD
- ➔ HIRE BIKES
- ➔ SLOWTRAIL PRESSEGGER SEE
- ➔ FAMILY WORLD
- ➔ LAKE & SWIMMING POOLS
- ➔ OUTDOOR WORLD
- ➔ LAKE AND FLY FISHING
- ➔ NASSFELD GOLF
- ➔ MOTORCYCLE ADVENTURES
- ➔ RELAX WORLD
- ➔ SLOW FOOD TRAVEL
- ➔ +CARD HOLIDAY & GUESTCARD BASIC
- ➔ RAINBOW PROGRAM
- ➔ IMPORTANT NUMBERS



**MOUNTAINS
& LAKES**
WORLD OF



NASSFELD MOUNTAIN RAILWAYS

Off into the boundless mountain world!

The mountain railways at Nassfeld make the Carnic Alps conveniently accessible for holidaymakers and day visitors during the summer. You reach Carinthia's unique mountain world within just a few minutes by Millennium Express, Gartnerkofel chairlift and Madritschen chairlift. The pleasant mountain air and the panorama of the surrounding massifs take body and mind into another world.

Millennium-Express

The Millennium Express takes its passengers quickly and in comfort from Tröpolach uphill to the Nassfeld. With this lift, you reach the Tressdorfer Alm as well as the Madritsche upper terminus for example. Transport of pushchairs and mountain bike is free of charge (with a valid lift ticket).

- ➔ Aqua Trail „BergWasser“ & Dolce Vita
- ➔ Pendolino“ summer toboggan run
- ➔ Rock Labyrinth & Flying Fox Meile
- ➔ Tressdorfer Alm show dairy
- ➔ Lift & Bike Giro
- ➔ 9 Single Trails & 1 Flow Trail

Operating times: 06.06. - 27.09.2020 - daily from 9 am - 4.14 pm
06.07. - 25.08.2020 - daily from 9 am - 5.15 pm

Bike transport: € 6,00 or € 20,- daily ticket!

Contact: Millennium-Express
9631 Tröpolach 150, Tel.: +43 (0) 4285 / 636

No operation: In bad weather, thunderstorm and dense fog!



Gartnerkofel chairlift

Mountains of holiday bliss! The mountain railway reveals a panoramic view to the Julian Alps, the Dolomites and the Hohe Tauern. The following and more experiences await around the Gartnerkofel:

- ➔ Geotrail Nassfeld
- ➔ Wulfenia
- ➔ Huts: Watschiger Alm, Garnitzenalm
- ➔ „Zur Berghex“ bei der Bergstation
- ➔ Bergspielplatz „Almrausch mit Fix & Foxi“
- ➔ Klettersteig Däumling
- ➔ Panoramaterrasse inkl. „Sky Plate“
- ➔ Nassfeld Cinema & Photopoint Gartnerkofel
- ➔ Bicycle and mountain bike transfer

Operating times: 11.06. - 20.09.2020 - daily from 9 am - 4 pm
06.07. - 25.08.2020 - daily from 9 am - 5 pm

Bike transport: € 6,00 or € 20,- daily ticket

Contact: Gartnerkofel chairlift
9620 Sonnenalpe Nassfeld, Tel.: +43 (0) 4285 / 8190

Madritschen chairlift

The Madritschen chairlift takes you from the Sonnenalpe hotel zone, where exciting adventures are waiting on the “Pramollo Wild Bunch“ adventure mile, uphill to the Madritschenkopf. Once arrived, you cannot only enjoy the stunning panorama und take a break at the highest-situated alpine hut, you also discover many other adventures for the entire family there!

- ➔ „In the Realm of the Wild Bunch“ adventure mile with Fix & Foxi
- ➔ Connection to Kofelplatz Madritsche with attractions
- ➔ Bicycle and mountain bike transport
- ➔ Nassfeld Single Trails
- ➔ „Madritschen Tour“ - das alte Steinvolk Madritschen retten!

Bike transport: € 6,00 or € 20,- daily ticket

Operating times: 19.06. - 20.09.2020 - daily from 9 am - 4 pm
28.09. - 04.10.2020 - daily from 9 am - 5 pm

Contact: Madritschen chairlift
9620 Sonnenalpe Nassfeld 5, Tel.: +43 (0) 4285 / 8231

No operation: In bad weather, thunderstorm and dense fog!

Piccolo Express

Mobility in the mountains – with the unique Piccolo Express. Shuttle between the adventure centres Tressdorfer Alm, Sonnenalpe Nassfeld, Gartnerkofel chairlift or just simply enjoy a panoramic ride..

Timetable Piccolo Express

09:30	11:05	12:15	13:30	15:00	16:40	↑ Tressdorfer Alm	09:40	11:15	12:25	14:00	15:10	16:50
09:25	11:00	12:10	13:25	14:55	16:35	Tröglweg	09:45	11:20	12:30	14:05	15:15	16:55
09:20	10:55	12:05	13:20	14:50	16:30	Hotel Zone	09:50	11:25	12:35	14:10	15:20	17:00
09:15			13:15		16:25	Staatsgrenze	09:55		12:40		15:25	
09:10	10:50	12:00	13:10	14:45	16:20	Bundesstraße	10:00	11:30	12:45	14:15	15:30	17:05
09:00	10:40	11:50	13:00	14:35	16:10	Gartnerkofelbahn	10:10	11:40	12:55	14:25	15:40	17:15
08:45	10:25				15:55	Sonnleitn	↓ 10:25				15:55	↓

Weissensee mountain railway

A modern 4-seater chairlift with a length of 1.300m and a difference in altitude of 380 m. Lower terminus in 956 m above sea level

A worthwhile excursion:

- ➡ to the jause stations Naggler Alm and Kohlroselhütte
- ➡ starting point for beautiful hiking tours
- ➡ to the "Drachsel Bildstöckl" starting point
- ➡ EU-Monument „Wegweiser für Morgen“ with panorama view
- ➡ 3 MTB Trails from the mountain to the lake with a length of 3 km

Operating time:

27.05. - 04.10. 2020
9 am - 5 pm

And on following days
07.,10.,14. and 17. Oktober 2020
Only nice weather - also 11. and 18. Oktober!

Rest day:

On monday in may, june, september and october

No Operation:

In bad weather, thunderstorm and dense fog!



MOUNTAINS
& LAKES
WORLD OF



HIKE WORLD

Best chances for real moments of happiness.

Every step clears the mind. Every breath at the top of the mountain widens the horizon. Whether it is hiking along the Carnic and Gailtal Valley High Route, during the wonderful immersion in Europe's largest mountain pasture area or when exploring the geo trails, where you can follow the tracks of times long past on former sea beds. Hike World's 1,000 km network of hiking trails promises boundless nature and leisure experiences, paved with unforgettable moments of happiness.

- 1.000 km of hiking trails (600m bis 2.800 m)
- Cross-border routes as far as the Italian „Val Canale“
- 2 long-distance hiking trails: Carnic and Gailtal Valley High Route
- Marian pilgrimage and the Path of the Book
- 2 mountaineering villages: Kötschach-Mauthen and the Lesachtal Valley
- Slow Trail at Lake Pressegger See through Austria's second-largest reed belt
- 25 theme trails; beautiful mountain lakes
- Geo trails in the Carnic Alps Geo Park
- Vie ferrate and climbing routes
- 4 summer mountain railways at Nassfeld and one at Lake Weissensee
- 46 serviced alpine farms in Austria and Italy along the Carnic Milky Way

www.karnische-milchstrasse.info





**MOUNTAINS
& LAKES**
WORLD OF

Nassfeld
Pressegger See
nice surprise



ENCOUNTERING COWS ON ALPINE PASTURES

TIPS

Correct behaviour when encountering cows – for a pleasant hiking experience in any situation.

- ➔ Do not leave hiking trails on alpine pastures!
- ➔ Please keep your dog under control and on a leash!
- ➔ Walk calmly and without attracting attention past the animals in safe distance (20 - 50 meters).
- ➔ Do not startle the animals and do not look the animals directly in the eyes.
- ➔ Leave the animals alone and do not touch them. Never touch calves!
- ➔ Watch out for threatening gestures of the animals: lowering the head, pawing the ground, lowering, snorting.
- ➔ When the animals approach: keep calm, don't turn your back and leave the alpine pasture slowly!
- ➔ Take your dog off the leash immediately when an attack by an animal is imminent.
- ➔ Don't wave around with the stick. In an absolute emergency, strike the cow's nose with a stick.

KÄRNTEN
Lust am Leben

Alpin huts

Gemeinde Hermagor-Pressegger See

WATSCHIGER ALM	Teresa Weidhofer	Tel. +43 (0) 650 / 4179669
TRÖPOLACHER ALM	Christian Jenul	Tel. +43 (0) 650 / 6262398
TRESSDORFER ALM	Arno Oberluggauer	Tel. +43 (0) 664 / 4313056
ALMGASTHOF TRESSDORFER ALM	Hannes Dollinger	Tel. +43 (0) 4285 / 8181
ROSS ALM	Rainer Buchacher	Tel. +43 (0) 676 / 7245535
RATTENDORFER ALM	Geog Ertl	Tel. +43 (0) 650 / 5514080
DELLACHER ALM / GASTHAUS PIPP	Johann Pipp jun.	Tel. +43 (0) 676 / 3879282
EGGER ALM / GASTHOF ZUM RUDI	Fam. Jank	Tel. +43 (0) 676 / 9343605
EGGER ALM / GASTHOF ZUR EGGER ALM	Fam. Buchacher	Tel. +43 (0) 650 / 3910520
RUDNIG ALM	Roland Schluder	Tel. +43 (0) 644 / 2039259
GARNITZENALM	Ardit Kurtaj	Tel. +43 (0) 676 / 7117149
RADNIGER ALM	Herr Truppe	Tel. +43 (0) 4282 / 4265
KÜHWEGER ALM	Anneliese Grezko	Tel. +43 (0) 660 / 2170974

Alpin huts

Gemeinde Weissensee

NAGGLER ALM	Hr. Neveux / Fr. Zorn	Tel. +43 (0) 681 / 203 267 23
KOHLRÖSLHÜTTE	Familie Jung	Tel. +43 (0) 664 / 885 01 860
HERMAGORER BODENALM	Familie Fercher	Tel. +43 (0) 650 / 4002488
FISCHERALM	Fam. Wassertheurer	Tel. +43 (0) 4716 / 225
ALM HINTERN BRUNN	Familie Brandtner	Tel. +43 (0) 650 / 8704116
WISACHER ALM	Karin Gamberger	Tel. +43 (0) 664 / 2231240
TECHENDORFER ALM	Anton Messner	Tel., +43 (0) 680 / 3228376
FERIENHOF TSCHABITSCHER	Familie Kolbitsch	Tel. +43 (0) 4713 / 2358
RONACHER ´S EINKEHR	Familie Ronacher	Tel. +43 (0) 761 / 256
GASTHOF DOLOMITENBLICK	Familie Müller	Tel. +43 (0) 4761 / 390

Alpin huts

Gemeinde Gitschtal

JAUSENSTATION STOFFLBAUER	Karoline Brandtner	Tel. +43 (0) 4286 / 423
MÖSLALM	Bernhard Flaschberger	Tel. +43 (0) 664 / 3153479
KOHLRÖSLHÜTTE	Heinz Jung	Tel. +43 (0) 664 / 88501860
BERGGEISTHÜTTE	Familie Waldner	Tel. +43 (0) 4286 / 228

Alpin huts

Gemeinde Kirchbach

STRANIGER ALM	Klaus Kanzian	Tel. +43 (0) 650 / 3726174
WAIDEGGER ALM	Katharina Finkenzeller	Tel. +49 (0) 1766 / 1270648
ACHORNER ALM	Wolfgang Scheiber	Tel. +43 (0) 664 / 3214438
KLEINKORDIN ALM	Herbert Wassertheurer	Tel. +43 (0) 664 / 2039259
JOCHALM	Helga Gasmayer	Tel. +43 (0) 676 / 9612493
GROSSFRONDELL ALM	Peter Sostaric	Tel. +43 (0) 660 / 3871176
GUNDERSHEIMER ALM	Fam. Buchacher	Tel. +43 (0) 650 / 6361487

Alpin huts Gemeinde Dellach

ROSSER ALM
ZOLLNERSEEHÜTTE
JAUKENALM HÜTTE

Manuel Pecnik
Maria Taurer
Max Zojer

Tel. +43 (0) 664 / 2159376
Tel. +43 (0) 676 / 9218118
Tel. +43 (0) 676 / 7701904

Alpin huts Gemeinde Kötschach-Mauthen

GASTHOF UNTERE VALENTINALM
ÖDENHÜTTE
UNTERE BISCHOFALM
OBERE BISCHOFALM
AL VALICO, GASTHOF AM PLÖCKENPASS
GASTHOF PENSION LAMPRECHTHOF
ENZIANHÜTTE

Bruno Neumayer
Familie Warmuth
Josef Warmuth
Assunta Ottene Mentila
Markus & Johanna Lamprecht
Helga Klocker

Tel. +43 (0) 664 / 8419950
Tel. +43 (0) 4715 / 319
Tel. +43 (0) 4715 / 319
Tel. +39 (0) 0433 / 779326
Tel. +43 (0) 4715 / 422
Tel. +43 (0) 650 / 7602421

Alpin huts Gemeinde St. Stefan / Gail

DOLINZAALM
ST. STEFANER ALM
Pöllander Alm

Christoph Grafenauer
Josef Cekon
Kurt Fischer

Tel. +43 (0) 650 / 2812183
Tel. +43 (0) 664 / 4094800
Tel. +43 (0) 676 / 4181238

Alpin huts Gemeinde Feistritz / Gail

SCHUTZHÜTTE OISTERNIG

Nataschia Errath

Tel. +39 333 / 7700365

Alpin huts Lesachtal & Osttirol

OBSTANSERSEEER HÜTTE
PORZEHÜTTE
WOLAYERSEE HÜTTE
MARINELLI HÜTTE
FILMOOR-STANDSCHÜTZENHÜTTE
HOCHWEISSSTEINHAUS
CONNYALM HÜTTE
STEINECKENALM
MÜHLENSTÜBERL
SILLIANER HÜTTE
LECKFELDALM
CALVI HÜTTE

Heinz Bodner
Peter Auer
Helmut Ortner
Fam. Tamussin
Johanna Köberl
Marion Guggenberger
Fam. Scherer
Anna Wilhelmer
Fam. Windbichler
Viktoria Maurer

Familie Galler

Tel. +43 (0) 4848 / 5422
Tel. +43 (0) 664 / 3256452
Tel. +43 (0) 720 / 346141
Tel. +43 (0) 433 / 779177
Tel. +43 (0) 664 / 1127153
Tel. +43 (0) 676 / 7462886
Tel. +43 (0) 4847 / 5134
Tel. +43 (0) 664 / 2011527
Tel. +43 (0) 4716 / 20053
Tel. +43 (0) 664 / 5323802
Tel. +43 (0) 664 / 3412813
Tel. +39 (0) 43546933



BIKEWORLD

The largest biking region on the sunny side of the Alps

Karnische Alpen, Julische Alpen und Gailtaler Alpen sind gleichzeitig Bühne und Kulisse dieser grenzenlosen BIKEworld – in Österreich und Italien. Grenzenlose Freiheit erlebt man auf 46 markierten MTB- und Radrouten und Bikerunden.

Die Vision: gemeinsam mit den italienischen Nachbarn eine BIKEworld anzubieten, die Gäste begeistert. Das Versprechen „grenzenloser Bike-Erlebnisse“ kann man in der Kärntner Region Nassfeld-Pressegger See – Lesachtal – Weissensee durchaus wörtlich nehmen.

Ein Herzstück dieser neuen BIKEWorld ist die „TRAILworld of Mountains“:

Hinter diesem Namen verbergen sich 12 Single-Trails, davon neun am Nassfeld sowie drei am Weissensee. Nagelneu ist der Flow-Trail „MEX-Line 1“ in Tröpolach. Das Versprechen: Die „TRAILworld of Mountains“ wird stetig größer und wird auch in Zukunft deutlich weiter entwickelt.

Alle Trails sind über Bikerouten erreichbar.

Vor allem aber auch bequem mit den Sommer-Bergbahnen, sowohl am Nassfeld (dort sind es gleich drei Bahnen), als auch am Weissensee.

BIKEworld of Mountains

- ➔ 950 km of MTB and cycle routes
- ➔ 46 marked MTB routes
- ➔ **Trail World:** 11 single trails at Nassfeld and Lake Weissensee
- ➔ **Nassfeld:** 1 flow Trail and an 11,7 km long Lift & Bike Giro
- ➔ 2 pump tracks (Nassfeld & Weissensee)
- ➔ 4 summer mountain railways with MTB transport at Nassfeld and lake Weissensee
- ➔ Bike and e-bike rental: “Rent everywhere – drop everywhere“
- ➔ Trail courses and biking technique trainings
- ➔ 46 serviced guiding and alpine farms
- ➔ Bike guiding and shuttle



**MOUNTAINS
& LAKES**
WORLD OF

Nassfeld
Pressegger See

nice surprise



Journeys of discovery on two wheels

Bike rides are a great way to explore Nassfeld and get to know the flora and fauna that make this region so special. A comprehensive network of trails and cycle paths measuring 730 km makes it easy to get around and experience the natural beauty that the province of Carinthia in the south of Austria has to offer.

Cycle tours for foodies

Cycling can be hungry work, so why not stop off at one of the many huts in the area serving traditional food? There is no feeling quite like enjoying a hearty lunch on the terrace looking out over freshly mown meadows and listening to the sound of birds singing. A modern infrastructure, including state-of-the-art lifts, make it easy to access bike trails and mountains huts high up in the Alps.

E-bikes „Cycle adventures with an added boost“

One of the main advantages of electric bikes is that it opens up cycling to many people who used to be reluctant to get on a bike, with the small electric motor making even relatively steep climbs easy to overcome. Rides that seem too far away on a normal bike are suddenly no problem on an e-bike. But don't just take our word for it – have a go yourself!

KÄRNTEN
Lust am Leben

Hire bikes hire anywhere – return anywhere

Enjoy the family cycle tracks stress-free by public transport.

Take the Gailtal Valley Cycle Track R3 via the R3a to Lake Pressegger See or the R3B Gitschtal Valley Cycle Track and stop at any of the train (Villach - Hermagor) or bus stops along the cycle tracks between Hermagor and Kötschach Mauthen. Simply return your hire bike ("hire anywhere – return anywhere") to the local hire station and then get on a bus or train.

PAPIN Sport – einer der größten Fahrraddienstleister Europas

Papin Sport has a fleet of 8000 bicycles in total and has approx. 90 employees distributed across 80 hire stations in Austria and Italy. Around 80,000 cycling enthusiasts hired bicycles from Papin Sport in 2016 alone. The most important routes so far are the cycle track Innichen – Lienz, the Dolomites Cycle Track, the Vinschgau Cycle Track as well as the R1 Drava Cycle Track. Commencing this summer season, Papin Sport will provide its services in cooperation with local partners along the R3 Gailtal Valley Cycle Track between Kötschach Mauthen and Villach, the Gitschtal Valley Cycle Track as well as the Alpe Adria Cycle Track between Tarvisio and Venzone.

Bike hire in Nassfeld-Pressegger See

- ↻ Sölle Sport - Tröpolach
- ↻ Intersport Alpensport - Weissensee
- ↻ Essl Manfred - Hermagor
- ↻ Bikeparadies Härle - Hermagor
- ↻ Alpencamp Kötschach-Mauthen

E-Bike hire in Nassfeld-Pressegger See

- ↻ Alpencamp Kötschach-Mauthen
- ↻ Sport Sölle - Tröpolach
- ↻ Bikeparadies Härle - Hermagor
- ↻ Intersport Alpensport - Tröpolach
- ↻ Essl Manfred - Hermagor

www.nassfeld.at/bikeverleih

SLOW TRAIL PRESSEGGER SEE



I first see the mountains with their peaks rising up steeply into the blue sky. The Gailtal Valley Alps and the Carnic Alps protectively surround Lake Pressegger See here. Its dense reed belt only allows for a narrow path. Between the high blades, I discover a great crested grebe. Its grey plumage glistens in the sun. I watch it for a while and continue on my route to the steep slope of the lakeside from where the view to the typical Carnic mountain peaks with Nassfeld is especially beautiful. Further down at the glistening water balances an old boathouse.

- ➔ Let yourself be accompanied by the clear blue of the lake.
- ➔ To see it from ever new perspectives.
- ➔ Take its shimmer with you, deep into the forest of reeds
- ➔ Where in the green silence the thoughts rest.

The Slow Trail around Lake Pressegger See starts at the Hermagor Lido. At least 1.5 hours should be planned for the easy, around 6 km long hiking tour. It would be even better if you don't set a time limit and enjoy the relaxing moment of every step through the beautiful reed landscape instead.

Start your **tour**. Walk through the **portal**. Draw on the **power of the moment**.
4 stations invite to stop for a while.



**MOUNTAINS
& LAKES**
WORLD OF

Nassfeld
Pressegger See

nice surprise



FAMILY WORLD

“In the Realm of the Wild Bunch” adventure mile

Following the smugglers’ trail

Visitors of all ages solve tasks along the smugglers’ trail to bring the stories around the “Pramollo Wild Bunch” with a Happy End. Based on a comic book with Fix & Foxi, a mixed bunch of people secretly smuggle goods from Pontebba (IT) to Hermagor. Diverse activity stations also invite to re-enact part of the adventure story at original locations.

Madritschen Tour

Save the old Steinvolk Madritschen!

The „smugglers’ hideout“, the „smugglers’ castle“ climbing tower and the „castle kitchen“ where children play with sand, baking and cooking are connected by a „load carriage“ for the transport of smuggled goods. A 20 m long rope slide serves as an „escape route“.

The good-natured Almrausch

Adventures with Fix & Foxi

Children find a vast adventure area with eight stations at the upper terminus of the Gartnerkofel chairlift. Tricky tasks must be accomplished at every station. The good-natured “Almrausch” is there to help the little ones at every station. This mysterious hermit, guardian of the animals and protector of nature lives in a cave at Nassfeld. Together with the children, he goes out to find the Wulfenia magic flower and to protect the mountain and his animals. Tests, like racing through the air on the Mini Flying Fox, clambering around in the house on stilts or accomplishing a climbing game, must be mastered despite his opponent, the “Speckwutz”.

KÄRNTEN
Lust am Leben

In the Realm of the Lake Witch

According to the story, the "Lake Witch", a mythical creature, lives in the vast reed belt of Lake Pressegger See. She is constantly on the look-out for trouser buttons, coins and small toys for her to take them deep down into the waters of Lake Pressegger See. All these treasures provide her with a magical power that she uses to make the waters of Lake Pressegger See so pleasantly warm.

The 2.400 m² of the theme playground is the habitat of the Lake Witch. Wherever you look there is something exciting to see. The huge Lake Witch eerily mixes a potion while being watched by a giant snake, a dragonfly and a water spider that invites to climbing around. There are also reed manikins and other comic figures, teaching children about the nature of the lake in a playful way. The key points are spaces for activities close to nature and novel pieces and elements for children to play with.

Grass Maze at Lake Pressegger See

Venture into the Grass Maze! The maze is in the Realm of the Lake Witch, a mean-spirited character, which can be encountered in the adventure playground. Exciting play and adventure stations also await along a diverse circular trail around Lake Pressegger See. Apart from playful adventures, you will also learn interesting facts about this fascinating lake and its neighbouring moor landscape here.

The trail leads right through the western and eastern reed belt of the lake. Carinthia's largest connected reed bed is a fascinating habitat for many rare faunal and floral species.

A walk along the circular lake trail is especially suitable for families and children from age 5. The lidos in Hermagor and Preseggen are ideal starting points; both lidos offer ample parking. Several rest areas and restaurants along the way invite to stop and stay a while.

Children's holiday with special children's programme

Programme for children (aged 6 - 10 years)

If parents simply want to switch off during their holidays and enjoy a quiet day, the children can take part in the supervised children's programme - with the „+CARD holiday“ even free of charge!

The program includes different experiences depending on the season: e.g. the exploration of the mountain playground „Almrausch“ with subsequent Kaiserschmarren, a funny sausage barbecue at the campfire and much, much more...

Riddle Hunt with the Nassfeld Legends

Discover the adventure playgrounds of Rolf Kauka's Fix & Foxi and the Nassfeld Legends, solve the three puzzles, collect your reward and win a great family vacation.



3 playgrounds and 3 puzzles await you!

- Adventure mile „In the realm of the Wild Bunch“ at the Madritschenbahn valley station
- Adventure playground „in the realm of the sea witch“ at Pressegger See
- Mountain playground „Almrausch“ on the panorama terrace Gartnerkofel

You can find the puzzle folder with all information at every playground or in the Information & Service Centre Nassfeld-Pressegger See!



**MOUNTAINS
& LAKES**
WORLD OF

Nassfeld
Pressegger See

nice surprise



LAKE & SWIMMING POOLS

1. Kärntner Erlebnispark am Pressegger See

Kontakt: Tel.: +43 (0) 4282 / 3388
www.erlebnispark.cc

Public lidos Pressegger See

Strandbad Hermagor included in the **+CARD holiday**

Kontakt: Tel.: +43 (0) 4282 / 2668; www.presseggersee.jimdo.com

Strandbad Presseggen

Kontakt: Tel.: +43 (0) 4282 / 3715; www.seestube.at

Strandbad Südufer „Passriach- Südufer“ included in the **+CARD holiday**

Kontakt: Tel.: +43 (0) 650 / 9705324, www.samerhof.at

Seebad Schluga

Kontakt: Tel.: +43 (0) 4282 / 2760; www.schluga.com

Open air pools

Erlebnis Freibad Gitschtal included in the **+CARD holiday**

Kontakt: Tourismusinformation Gitschtal;
Tel.: +43 (0) 4286 / 219 oder +43 (0) 4286 / 21030

Freibad Kirchbach included in the **+CARD holiday**

Kontakt: Tel.: +43 (0) 4284 / 264

Natural open-air pools

Naturschwimmbad Radnig included in the **+CARD holiday**

Kontakt: Tel.: +43 (0) 4282 / 24110

Erlebnis Naturbad Vorderberg included in the **+CARD holiday**

Kontakt: Tel.: +43 (0) 4282 / 2158

KÄRNTEN
Lust am Leben



**MOUNTAINS
& LAKES**
WORLD OF

Nassfeld
Pressegger See

nice surprise



OUTDOOR WORLD

Where nature shows its untamed power, true outdoor fans will find a leisure park to their liking. Kayaking or river tubing on the Gail river, canyoning in pristine gorges or climbing and mountaineering; here you will have fun and feel boundless freedom. Also, the Garnitzen Gorge or the geo trails show impressively how nature literally moves mountains and creates spectacular landscapes.

- ➔ Outdoor Park Nassfeld - From Rock Labyrinth to the Flying Fox
- ➔ KClimbing routes in the Upper Gailtal Valley, Lesachtal Valley, in the Julian Alps, around Nassfeld
- ➔ "Winkelturm" via ferrata (Rosskofel)
- ➔ Paragliding in the Carnic and Gailtal Valley Alps
- ➔ Geo trails in the Carnic Alps Geo Park
- ➔ Nordic.Sports.Park™: Nassfeld-Pressegger See
- ➔ Kajak tours in the Lesachtal Valley
- ➔ Family rafting on the Gail river
- ➔ Canyoning, schluchting, Mega Dive
- ➔ Lakeside and flying fishing

KÄRNTEN
Lust am Leben



**MOUNTAINS
& LAKES**
WORLD OF

Nassfeld
Pressegger See
nice surprise



LAKE & FLY FISHING

Fishing in natural waters

A healthy fish population needs clean water, intact nature and plenty of space. The destination Nassfeld-Pressegger See fulfils all these pre-requisites easily, and even so well that several species can be caught when fishing in Carinthia. Whether flowing or standing bodies of water: the selection for anglers is gigantic – and that also reflects the quality of the environment.

Fishing water Pressegger See

Day ticket	€ 20,-
Week ticket	€ 60,-
2-week-ticket	€ 90,-

Contact: Ernst Lindermuth | 9620 Presseggersee 1
Tel +43 (0) 4282 / 3880

Fishing water Lake Pressegger See - outflow

Day ticket	€ 20,-
Week ticket	€ 55,-
2-week ticket	€ 75,-

Contact: Karl Heinz Pipp; 9615 Görttschach
Tel. +43 (0) 650 / 5004861

Informationen: Info- & Servicecenter Nassfeld-Pressegger See
9620 Wulfeniaplatz 1, Tel +43 (0) 4282 / 2043
www.nassfeld.at





MOUNTAINS
& LAKES
WORLD OF

Nassfeld
Pressegger See

nice surprise



NASSFELD GOLF

Golfing & pitching surrounded by a mountain panorama

The spaciouly designed (70 ha) and scenically impressive 18-hole golf course (640 m above sea level) is situated in the heart of the mountain panorama of the Gailtal Valley Alps and Carnic Alps. The diverse fairways and the natural landscape guarantee pure golfing fun!

- 18-hole championship course
- 6-hole panorama course (Par 3)
- Putting & Chipping Area
- 270 m driving range
- 1.000 m² putting green
- Club house, restaurant/bar
- Golf school

Golf offers with the +CARD holiday

Get to know the Nassfeld Golf course with our +CARD holiday! Starting with an inclusive offer where you can try and learn about golf sport to discounted offers like the golf green fee on the 18-hole championship course..

Contact:

Golfanlage Nassfeld Golf
9631 Waidegg 66
Tel. +43 (0) 4284 / 20111

KÄRNTEN
Lust am Leben



MOTORCYCLE ADVENTURES in Carinthia

Get your motor running

Nassfeld-Pressegger See is the perfect starting point for motorbike adventures over the border into Italy and Slovenia. The twisty mountain roads leading over high-altitude passes are the stuff of dreams for bikers, with some routes taking riders quite literally from the mountains to the sea. The Dolomites, Karawanks, Carnic Alps, Julic Alps or even the highest mountain in Austria, the Großglockner, can all be easily reached from Nassfeld.

The Top 10 roads for motorbikes south of the alps

Just on its own, the bikers' paradise of Carinthia offers a wealth of wonderful roads through mountain passes and panoramic roads to choose from. Here we are going one step further and presenting you with a selection of the 10 most popular roads for motorbike riders in Carinthia and the adjoining Alps-Adriatic region.

- ➔ Großglockner Hochalpenstraße (AT)
- ➔ Nockalmstraße (AT)
- ➔ Villacher Alpenstraße (AT)
- ➔ Gerlitzen Alpenstraße (AT)
- ➔ Malta Hochalmstraße (AT)
- ➔ Nassfeldpass (AT / IT)
- ➔ Mangartstraße (SLO)
- ➔ Vršič Passstraße (SLO)
- ➔ Zoncolan Passstraße (ITA)
- ➔ Sella di Razzo (IT)



RELAX WORLD

Enjoy and relax

Time for time-out! The wellness programme of the holiday destination Nassfeld-Pressegger See relaxes pretty much all muscle groups and gets body and mind in a holiday mood after a few minutes already. The region's hotels and spas offer indoor pools, saltwater rooms, panorama saunas and your personal pampering programme with massages and individual treatments.

Aquarena Kötschach-Mauthen

Multi-purpose indoor pool, swimmers & non-swimmers area, sauna landscape, infra-red cabin, sunbeds

Contact: Kötschach 125
9640 Kötschach Mauthen
Tel.: +43 (0) 4715 / 567

Infos: www.aquarena.info

Kärnten Therme

Multi-purpose indoor pool, outdoor pool, sauna landscape, steam bath, hamam, open-air sauna

Contact Kadischenalle 25
9504 Warmbad Villach
Tel.: +43 (0) 4242 / 300 12 750

Infos: www.kaerntentherme.at

Falkensteiner Hotel Carinzia & SPA Carinzia

Day SPA with indoor pool, incl. bathrobe, swim bag and flip-flops (for hire) Massages, beauty & baths with prior booking and for a fee.

Contact: Tröpolach 156
9631 Jenig
Tel. +43 (0) 4285 / 72000

Infos: www.falkensteiner/hotel&spa/carinzia

Alpen Adria Hotel & SPA Pressegger See

Day SPA indoor pool Relax and unwind at the Alpen Adria SPA with "Gailtal Valley sweat box" and much more! Indoor pool with whirl, loungers and underwater music.

Contact: Pressegger See 1
9620 Hermagor
Tel. +43 (0) 4282 / 2666
www.alpenadriahotel.at

Hotel Garni Zerza - Sauna landscape

Contact: Tröpolach 93
9631 Jenig
Tel. +43 (0) 4285 / 556
www.hotel-garni.nassfeld.at

Schlössl Lerchenhof - Sauna landscape

Contact: Untermöschach 8
9620 Hermagor
Tel. +43 (0) 4282 / 2100
www.lerchenhof.at

AlpinSPA Schluga

Opening times: Indoor pool daily 8 am - 8 pm
Sauna daily 3 pm - 8 pm

Price: € 20,00 per adult - Sauna & pool
€ 8,50 per adult - pool
€ 6,00 per child (4-13 years) - pool

Contact: Obervellach
9620 Hermagor
www.schluga.com

Massagen / Cosmetic

Massageinstitut Obernosterer	9620 Kühweg 43	Tel +43 (0) 676 / 351 61 40
Massageinstitut Sigrid Huber	9620 Eggerstr. 18	Tel +43 (0) 650 / 818 80 84
herzogin Kosmetiksalon	9631 Tröpolach 56	Tel +43 (0) 676 / 7033637
Kosmetik Katrin	9620 Hermagor	Tel +43 (0) 4282 / 25206
Gailtaler Wohlfühloase	9623 St. Stefan 27	Tel +43 (0) 650 / 9403787
Kathrin´s Fußpflege	9620 Hauptstr. 8	Tel +43 (0) 699 / 19277391



**MOUNTAINS
& LAKES**
WORLD OF



Slow Food

Nassfeld

Pressegger See

nice surprise



SLOW FOOD TRAVEL Alpe Adria Carinthia

The Gailtal and Lesachtal valleys in Carinthia have been named the world's first Slow Food Travel Destination by Slow Food International. A journey here leads into the valleys to the people and flavours and their handed-down knowledge and traditional crafts.

Watch on and see good, clean food being produced – including baking bread, producing cheese, brewing beer, making butter and many more traditional crafts.

Track down the roots of good flavour and learn all about the exquisite Carinthian Slow Food cuisine during workshops, on cookery and baking classes or at the cosy guesthouses. Set off on a fantastic culinary voyage of discovery through Carinthia's most tasty corner and submerge yourself in the fascinating mountain landscapes of the Gailtal and Carnic Alps.

www.slowfood.travel

Experience card

REISEN ZU DEN WURZELN
DES GUTEN GESCHMACKS



Slow Food
Travel
LIFE TASTE SUSTAIN



KÄRNTEN
Lust am Leben

+CARD HOLIDAY AND GUESTCARD BASIC!

Improvement of a successful product!!

The +CARD holiday and the GuestCard Basic now offers our guests even more possibilities to enjoy their holidays to the fullest.



Unlimited holiday fun with the "+CARD holiday" - My advantages with the "+CARD holiday"

The +CARD holiday entitles you to use, for example, mountain railways and lidos without any additional costs and as often as you like, to take part in guided hiking and mountain bike / cycling tours and to have your kids entertained with the children's programme. There is also free admission to many facilities and adventures. Our bonus partners offer generous discounts (approx. 30%) in addition.

My advantages

With the "+CARD holiday", you use mountain railways and lidos free of charge. Guided, in part cross-border hiking and mountain bike tours as well as children's adventure programmes are also available. You use the regional public bus services without any extra costs, you are invited to a "Golf Taster" on the golf course or you visit the Möderndorf Local History Museum and many other facilities free of charge. Bonus partners offer generous discounts (approx. 30 %) in addition.

Does the "+Card PREMIUM" include all the services of the "GuestCard Basic"?

As a +CARD holiday holder you are of course automatically entitled to use all the advantages of the "GuestCard Basic" throughout the regions of Nassfeld-Lake Pressegger See, Lesachtal Valley and Lake Weissensee.

Where do I get the +CARD holiday from and what does it cost?

This card can only be obtained directly from your accommodation provider who will issue the card for the duration of your stay (valid from the day of your arrival) free of charge. The only condition is that you have booked your accommodation at one of our 150 "PREMIUM" partner companies. These companies are marked with "+Card PREMIUM" and are situated in the municipalities of Hermagor -Lake Pressegger See (Nassfeld, Hermagor, Lake Pressegger See), St. Stefan, Kirchbach, Dellach im Gailtal and the Gitschtal Valley.

For how long is the +CARD holiday valid?

The card is valid for the entire duration of your stay (including the day of your arrival and the day of your departure) or for seven consecutive days if you have purchased the card. There is no need to return the card; you can take it home as a souvenir. The accommodation provider will issue a new card should you decide to extend your stay.

How often can I use the services of the +CARD holiday?

The included services can be used as often as you like. Services with a fixed date or day of the week can only be used on that date/day. Applicable are dates/days stipulated by the relevant service partner

Is there also a +CARD holiday for my child?

Of course, our young guests also receive this card which entitles them to use included as well as bonus services – making children's holiday dreams come true

What if I lose my +CARD holiday?

The accommodation provider is entitled to issue a new duplicate card in case you have lost yours. The first card becomes invalid automatically and only the duplicate will be valid.

What happens if the +CARD holiday is misused?

In case of misuse or suspected misuse is ARGE-Qualitätsbetriebe entitled to revoke and block the card immediately. The card will not be replaced in such case. It is strictly not permitted to pass the card to third persons. In such cases, criminal charges will be pressed. The card is only valid in connection with a photo ID!

The following season periods and services apply:

Early summer season:	16.05. - 05. 06. 2020
Summer season:	06.06. - 20.09. 2020
Autumn season:	21.09. - 04.10. 2020

The terms and conditions of ARGE-Qualitätsbetriebe apply.

They are available on www.nassfeld.at/card

If you have any questions, requests about the brochure or want to comment on the brochure, please contact us. We also look forward to your opinion about the groundbreaking efforts which make the holiday destination Nassfeld- Pressegger See a pioneer in guest satisfaction and guest recommendation.

Contact:

Info & Servicecenter Nassfeld-Presegger See
9620 Hermagor | Tel.: +43 (0) 4285 / 8241
info@nassfeld.at | www.nassfeld.at



**MOUNTAINS
& LAKES**
WORLD OF



nice surprise

SERVICE GUESTCARD BASIC



Discount – 10 %

Strandbad Hermagor-Pressegger See	www.presseggersee.jimdo.com	9620 Presseggersee
Strandbad Pressegggen	www.seestube.at	9615 Pressegggen
Strandbad Südufer „Passriach-Samerhof“	www.samerhof.at	9624 Passriach / Südufer
Schluga Strandbad und AlpinSPA	www.schluga.com	9620 Vellach
Erlebnisschwimmbad Gitschtal	www.gitschtal.com	9622 Weissbriach
Naturschwimmbad Waldbad Mauthen	www.naturschwimmbad-waldbad-mauthen.at	9640 Kötschach-Mauthen
AQUARENA Wasser- und Wellnessoase	www.aquarena.info	9640 Kötschach-Mauthen
Freibad Kirchbach	www.kirchbach.gv.at	9632 Kirchbach
Naturbad Vorderberg	www.vorderberg.info	9623 St. Stefan
Strandbad Knaller Weissensee	www.knaller.at	9762 Weissensee
Erlebnisbad Lesachtal	www.freizeitanlage-lesachtal.at	9653 Liesing

Free of charge

Freie Benützung – regionaler Buslinienverkehr (von Arnoldstein bis Obertilliach im Lesachtal)	www.mobilbuero.at
--	--

Discount (min. 10 %)

GailtälBauer in Kirchbach (Hofführung)	www.gailtalbauer.at	9632 Kirchbach
Outdoor Park Nassfeld (Felsenlabyrinth, Flying Fox, 3D Bogensport)	www.outdoorparknassfeld.at	9620 Nassfeld
Sport Sölle Sportshop – Tröpolach	www.soelle.at	9631 Tröpolach 155
Lamatrekking	www.lamaland.at	9620 Neudorf
Bergbauerngolf		9622 Weissbriach
Fossilienwelt GeoPark Karnische Alpen	www.geopark-karnische-alpen.at	9635 Dellach
Fledermaushaus Feistritz	www.arge-naturschutz.at	9613 Feistritz
Schaukäserei (Führung in der Käserei)	www.tressdorferalm-kaeserei.at	9620 Nassfeld
Geführte Wanderungen Marktgemeinde Kirchbach	www.kirchbach.gv.at	9632 Kirchbach
Wohlfühlstadl Alpengcamp „Wohlfühlstadl“ Saunawelt“	www.alpengcamp.at	9640 Kötschach
SUP Center Pressegger See	www.sportwochen-presseggersee.at	



GÄSTECARD BASIC



Discount (mind 10 %)

Gitschtaler Kunst- & Handwerksstüberl (Schmiedemuseum)		9622 Weissbriach
www.gitschtalschmiede.at		
Alpinschule Go-Vertical OG (Canyoning)	www.go-vertical.at	
Weißensee-Bergbahn	www.weissensee.com	9762 Weißensee
Golfanlage Nassfeld Golf	www.nassfeld.golf	9631 Waidegg
Golfclub Drautal/Berg	www.drautalgolf.at	9771 Berg / Drautal
Kegelbahnen & Tennishalle Flaschberger	www.flaschberger.at	9620 Hermagor
Tennisplätze – Familienhotel Kreuzwirt	www.hotelkreuzwirt.at	9762 Weissensee
Minigolf Pressegger See	www.presseggersee.jimdo.at	9620 Presseggersee
Gailtaler Heimatmuseum	www.gailtaler-heimatmuseum.at	9620 Möderndorf
Villacher Fahrzeug- & Radio Museum	www.oldtimermuseum.at	9500 Villach
Schaubergwerk Terra Mystica & Montana	www.terra-mystica.at	9531 Bleiberg
Bungy Adventure - Jauntalbrücke 96 m	www.bungy.at	9113 Ruden
Erlebnisraum Lesachtal (geführte Wanderungen, Ausflusziele)		9653 Liesing
www.freizeitanlage-lesachtal.at		
Kräuterführung im Lesachtal	www.lesachtal.com	9653 Liesing
Führungen AbenteuerWaldErlebnisWelt Lesachtal	www.erlebnis-lesachtal.at	9653 Liesing
hepi Lodge Wochenprogramm		9653 Liesing
Fit & Fun – Outdoorprogramm	www.fitundfun-outdoor.com	9654 St. Lorenzen
Kinder Kochkurs (Das kleine Berghotel)	www.berghotel-lesachtal.at	9653 Liesing
Hochpustertaler Bergbahnen Sillian	www.hochpustertal-ski.at	9920 Sillian
Bergbahnen Obertilliach – Kinderspielmeile	www.obertilliacher-bergbahnen.com	9942 Obertilliach
Lesachtaler Morenden-Jause	www.wanderniki.at	9653 Liesing
Johann Lexer Geigenbaumuseum & Schusterwerkstatt		9653 Liesing
www.kulturwerkstatt-lesachtal.at		



**MOUNTAINS
& LAKES**
WORLD OF

Nassfeld
Pressegger See

nice surprise



RAINBOW PROGRAM

Gailtaler Heimatmuseum	Tel. +43 (0) 4282 / 3060	9620 Möderndorf 1
Geopark Karnische Alpen Besucherzentrum	Tel. +43 (0) 4718 / 301-17	9635 Dellach/Gail
Österreichisches Fledermaushaus	Tel. +43 (0)463 / 329 66 613	9613 Feistritz/Gail
Museum 1915 – 1918 „Vom Ortler bis zur Adria“	Tel. +43 (0) 4715 / 8513 32	9640 Kötschach
Museum Nötscher Kreis	Tel. +43 (0) 650 / 349 80 01	9611 Nötsch
Terra Mystica / Terra Montana	Tel. +43 (0) 4244 / 2255	9531 Bleiberg-Nötsch 91
Geigenbau und Schustermuseum	Tel. +43 (0) 664 / 214 16 51	9653 Liesing
Erlebnishof „GailtälBauer“ Kirchbach	Tel. +43 (0) 4284 / 25150-111	9632 Kirchbach 195
Tennishalle Flaschberger Obervellach	Tel. +43 (0) 4282/ 2020-4	9620 Obervellach
Tennisplätze - Familienhotel Kreuzwirt	Tel. +43 (0) 4713 / 2206	9762 Kreuzberg 2
Kegelcafe Flaschberger Obervellach	Tel. +43 (0) 4282 / 2020-4	9620 Obervellach
Kegelbahn Hotel Karnia Radnig	Tel., +43 (0) 4282 / 2056	9620 Radnig
Sagamundo „Haus des Erzählens“	Tel. +43 (0) 4246 / 766 66	9873 Döbriach
Porschemuseum Gmünd	Tel. +43 (0) 4732 / 2471	9853 Gmünd
Eishalle Pontebba	Tel. +39 0428 90526	IT 33016 Pontebba
Villacher Fahrzeug, Radio- & Uhrenmuseum	Tel. +43 (0) 4252 / 33 031	9500 Villach
Reptilienzoo Happ	Tel. +43 (0) 463 / 234 25	9020 Klagenfurt
Kino - Cineplexx Villach	www.cineplexx.at	9500 Villach
LOLLOPOP - Kärntens größte Spielewelt	Tel. +43 (0) 664 / 8159363	9500 Villach / Atrio

KÄRNTEN
Lust am Leben

IMPORTANT NUMBERS

Emergency phone number

Diensthabender Arzt	0900 88088 + Postleitzahl
Euro Notruf	112
Rotes Kreuz, Rettung, Notruf	144
Feuerwehr, Notruf	122
Polizei, Notruf	133
Ärzttenotruf	141
Bergrettung	140
Apothekenbereitschaft	1550
Vergiftung Notruf & Infozentrale	+43 (0) 1 406 43 43

Hospital

Gailtalklinik (keine Abmulanz)	Radninger Straße 12	9620	+43 (0) 4282 / 2220
Medalm	Tröpolach 168	9631	+43 (0) 4285 / 84150
Landeskrankenhaus Laas	Laas 9	9640	+43 (0) 4715 / 7701
Landeskrankenhaus Villach	Nikoleigasse	9500	+43 (0) 4242 / 2080

Doctors

Dr. med. Bianca Harrer	Hauptstraße 27	9620	+43 (0) 4282 / 2770
Dr. med. Michael Santner	10.Oktober Straße 2	9620	+43 (0) 4282 / 2480
Dr. med. Katharina Weber-Sommeregger	Gasserplatz 1	9620	+43 (0) 4282 / 2046

Pediatrician

Dr. Claudia Kreuzer	Riedergasse	9620	+43 (0) 4282 / 20656
Ordination nach Vereinbarung			

Ophthalmologist

Dr. Judith Klinger	Bahnhofstraße 5	9620	+43 (0) 4282 / 25135
--------------------	-----------------	------	----------------------

Gynecologist

Dr. meduniv. Gert Lernbaß	Blumengasse 10	9620	+43 (0) 4282 / 3138
Dr. Doris Matha	Gasserplatz 8	9620	+43 (0) 4282 / 4960

Ear- nose specialist

Dr. Andreas Neuhuber	Wulfeniaplatz 1	9620	+43 (0) 4282 / 25211
----------------------	-----------------	------	----------------------

Dentist

Dr. Angelika Mikschofsky	Hauptstr. 27a	9620	+43 (0) 4282 / 25111
Dr. Wolfgang Mikschofsky	Hauptstr. 27a	9620	+43 (0) 4282 / 25111
Dr. med. univ. Bernd Czermak	Dr. Hussa Weg 1	9620	+43 (0) 4282 / 2722
Dr. Thomas Hermann Aschenbrenner	Riedergasse 3	9620	+43 (+) 4282 / 3280

Urologist

Dr. Claudia Pitzler	10. Oktober Str. 2	9620	+43 (0) 4282 / 20073
---------------------	--------------------	------	----------------------

Apotheken

Adler Apotheke	Hauptstraße 4	9620	+ 43 (0) 4282 / 2066
Gailtal-Apotheken KG	Bahnhofstr. 10	9620	+43 (0) 4282 / 25381

Pharmacies

Dr. med.vet. Herbert Ladstätter	Gailtalstraße 33	9620	+43 (0) 4282 / 2660
Dr. med.vet. Martina Wassertheurer	Kühweg 24	9620	+43 (0) 664 / 4131717
Mag. Thomas Waysocher	Obervellach 18	9620	+43 (0) 4282 / 4898

Car Rental

Autovermietung Sixt	Villach / Fürnitz Kärntner Bundesstr.17	9586	+43 (0) 4257 / 23400
VW Audi Patterer	Villacher Straße 14	9620	+43 (0) 4282 / 2319

Car repair

VW Audi Patterer	Villacher Straße 14	9620	+43 (0) 4282 / 2319
Renault Auto Roth	Obervellach	9620	+43 (0) 4282 / 2151
Opel Piber	Förolach	9615	+43 (0) 4283 / 2270
Auto Schwarz e.U.	Kirchbach 94	9632	+43 (0) 4284 / 2230
Opel Scheiber	Waidegg 56	9631	+43 (0) 4284 / 454
Ford Suklitsch	Kötschach 219	9640	+43 (0) 4715 / 241
Kia Piber	Leifling 25	9635	+43 (0) 4718 / 215
Autohaus Presslauer-Webhofer GmbH	Kötschach 331a	9640	+43 (0) 4715 / 81910
Opel Schwarzenbacher	Kötschach	9640	+43 (0) 4715 / 343
Ford Suklitsch	Kötschach	9640	+43 (0) 4715 / 241
Gailtaler Autoklinik	Kirchbach 70	9632	+43 (0) 4284 / 700 25
Landtechnik Zankl	Jenig 7	9631	+43 (0) 4285 / 247
KS Autoprofi GmbH	Gailtalstraße 40	9620	+43 (0) 650 / 5985194
KFZ Rauter	St.Lorenzen/Lesachtal		+43 (0) 676 / 6703515

Lost and found

Stadtgemeinde Hermagor	Wulfeniaplatz 1	9620	+43 (0) 4282 / 2333
------------------------	-----------------	------	---------------------

Breakdown service

ÖAMTC	Obervellach 94	9620	+43 (0) 4282 / 2795
ÖAMTC-Partner Autohaus Presslauer-Webhofer	Kötschach	9640	+43 (0) 4715 / 8191

Horse riding

Reiterhof Schneider	St. Daniel 7	9635	+43 (0) 650 / 2610793
Reiterhof Wulfenia	Möderndorf 10	9620	+43 (0) 664 / 9129118

Key Service

Essl Manfred	Villacher Straße 6	9620	+43 (0) 4282 / 2418
--------------	--------------------	------	---------------------

Shoe Repair

Essl Manfred	Villacher Straße 6	9620	+43 (0) 4282 / 2418
--------------	--------------------	------	---------------------

Petrol stations

Eni Tankstelle Zankl	Jenig 7	9631	+43 (0) 4285 / 247
Café Zapfsäule Tankstelle	Tröpolach 83	9631	+43 (0) 4285 / 550
OMV - Tankstelle Hermagor	Gailtalstraße 12	9620	+43 (0) 4282 / 2142
Agip Tankstelle Opel Piber	Förolach	9615	+43 (0) 4283 / 2270
Rudolf Tankstelle	Obervellach	9620	+43 (0) 4232 / 2871
Tankstelle Kötschach	Bahnhofstraße 264	9640	+43 (0) 4175 / 363
Eni Tankstelle	Kötschach Mauthen 189	9640	+43 (0) 4175 / 408
Diskont Tank Turmöl Kirchbach	Kirchbach 84	9632	+43 (0) 4284 / 2230
Gas Station Zerza	Obervellach 92	9620	+43 (0) 4282 7 25125
E-car charging station Hermagor	Langegger Parkplatz	9620	
E-car charging station ÖAMTC	Gailtalstraße 40	9620	+43 (0) 4282 / 2795

Traffic / Taxi

Busauskünfte Mobilbüro Hermagor	Gösseringlände 7	9620	+43 (0) 4282 / 25225
ÖBB Zugauskunft Bahnhofstraße	Bahnhofstraße	9620	+43 (0) 5 1717
Taxi Kapp	Tröpolach 83	9631	+43 (0) 4285 / 234
Taxi Gratzner- Transporte	Tröpolach	9631	+43 (0) 4282 / 3066
Taxi Madritsch	Förolach	9620	+43 (0) 676 / 707 45 70



**MOUNTAINS
& LAKES**
WORLD OF



NASSFELD-PRESSEGGER SEE SUNSKIWORLD

110 km of pists

30 lifts

80 km of cross country ski tracks

Skit touring paradise Lesachtal

Natural ice rink on lake Pressegger See

CONTACT & INFORMATIONEN

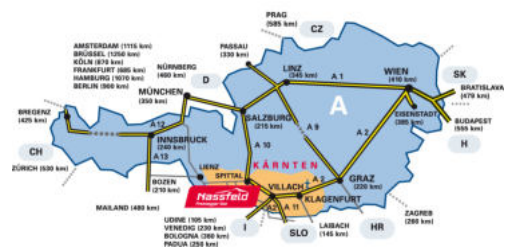
Info- & Servicecenter Nassfeld-Pressegger See

Wulfeniaplatz 1

9620 Hermagor

+43 (0) 4285 / 8241

info@nassfeld.at www.nassfeld.at



Mit Unterstützung von Land und Europäischer Union
LAND KÄRNTEN

